

OLYMPIC  TOWER

645 FIFTH AVENUE





# 645 FIFTH AVENUE

## THE HEART OF NEW YORK

Centered in Midtown Manhattan at the nexus of the world's most iconic business, fashion, and shopping districts, Olympic Tower is an icon of architecture and a beacon of culture. Its pioneering presence on Fifth Avenue — spanning past, present, and future — remains at the center of it all.

---



OLYMPIC  TOWER

# THE GREAT HALL

## VITAL PULSE

The newly renovated great hall is an inviting, lively concourse and cultural hub. Alluring 30-foot ceilings frame a modern, comfortable public passageway and respite, grounding the space with natural elements including green walls, trees, falling water, and a circadian lighting system. Tartinery, a premier NYC cafe and coffee bar located within the great hall, features craft coffee by Irving Farm and offers a Parisian influence to this aspirational space — a luxurious oasis featuring state-of-the-art amenities and dramatic artwork.

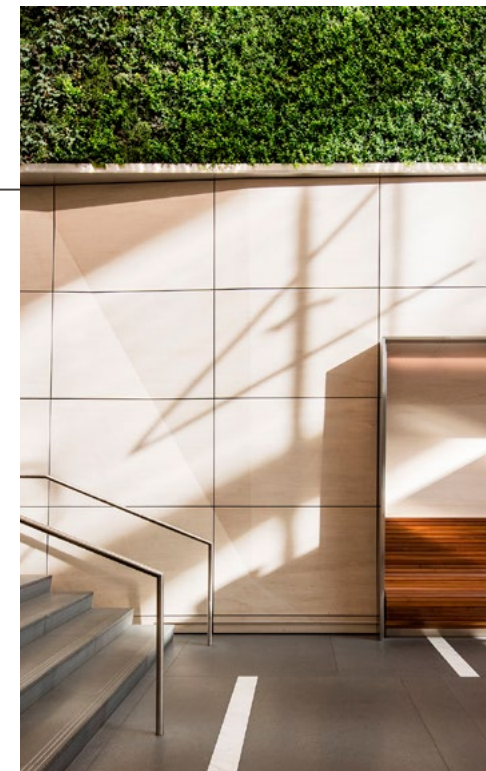


**ABUNDANT NATURAL LIGHT** A 32 FOOT ALL GLASS FACADE FACES NEW YORK CITY'S CHERISHED LANDMARK, ST. PATRICK'S CATHEDRAL.

**SCULPTURAL ART GALLERY** FEATURING RENOWNED CONTEMPORARY ARTIST LIAM GILICK TO EMBODY THE HISTORY AND CULTURE OF OLYMPIC TOWER.

**PERFORMANCE LIGHTING** AN ADVANCED CIRCADIAN LIGHTING SYSTEM FEATURES A 24-HOUR OSCILLATING CYCLE THAT MIMICS NATURAL LIGHT — TRANSITIONING FROM WARM AMBER HUES AT SUNRISE TO COOL, BRIGHT LIGHT DURING THE DAY.

**GREEN WALL TAPESTRIES** NOURISHED BY ILLUMINATION FROM THE CIRCADIAN LIGHTING, THESE VERTICAL GARDENS ACT AS A NATURAL AIR FILTRATION SYSTEM.



**tartinery**  
CAFE · BAR

**IRVING FARM**  
NEW YORK

# LOCATION

## GREAT COMPANIES MAKE GOOD COMPANY

You'll love the neighbors. Olympic Tower is home to the headquarters of NBA Properties, Richemont, some of the world's biggest and best luxury brands, and just around the corner from Fig And Olive. 645 Fifth Avenue is a must-visit destination along one of the world's most prestigious retail corridors.



### OLYMPIC TOWER NEIGHBORHOOD

- CENTRAL PARK** 7 BLOCKS
- ROCKEFELLER CENTER** 1 BLOCK
- GRAND CENTRAL TERMINAL** 7 BLOCKS
- TIMES SQUARE** 7 BLOCKS
- MUSEUM OF MODERN ART** 2 BLOCKS

## 21ST FLOOR

EVEN ITS TOWERING 21-FOOT CEILINGS CAN BARELY CONTAIN THE HISTORY, GLAMOUR, AND CELEBRITY OF OLYMPIC TOWER'S 21ST FLOOR. HEADQUARTERS TO LEGENDARY FASHION BRAND HALSTON AT THE HEIGHT OF ITS EMPIRE, THIS PREMIER SPACE IS BOTH AN EYE-POPPER AND A SHOW-STOPPER. AN EXPANSIVE, MODERN, LIGHT-FILLED INTERIOR IS MADE ALL THE MORE DESIRABLE BY INCOMPARABLE VIEWS OF ST. PATRICK'S CATHEDRAL AND ROCKEFELLER CENTER'S FAMOUS CHANNEL GARDENS. INSPIRING DRAMA AND SUMPTUOUS LUSTER HAVE MADE THIS ONE OF THE CITY'S MOST CHARISMATIC AND CAPTIVATING LOCATIONS FOR DECADES.

# OLYMPIC TOWER

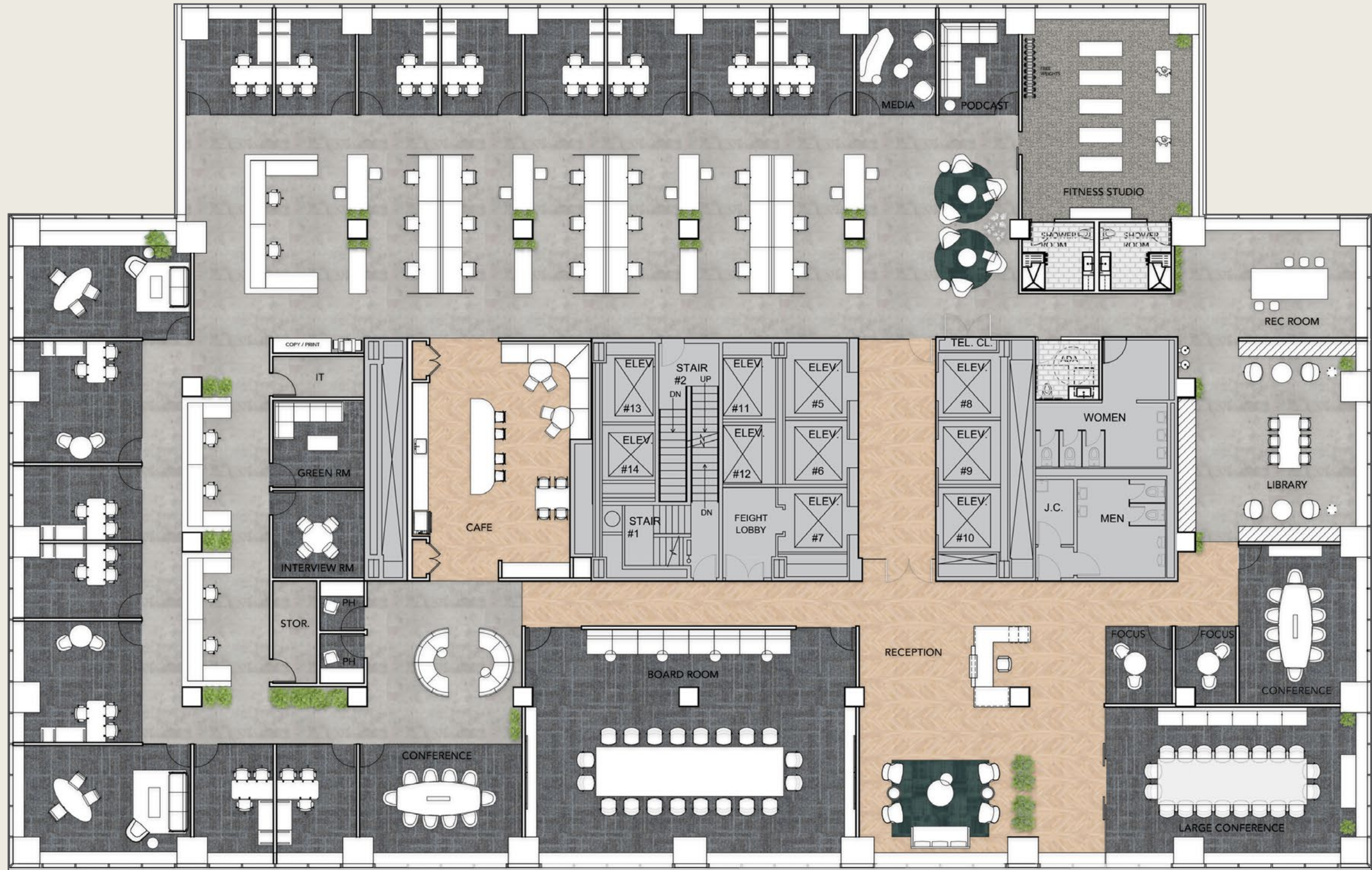
## 21ST FLOOR

645 FIFTH AVENUE  
AVAILABLE SPRING 2022

RSF

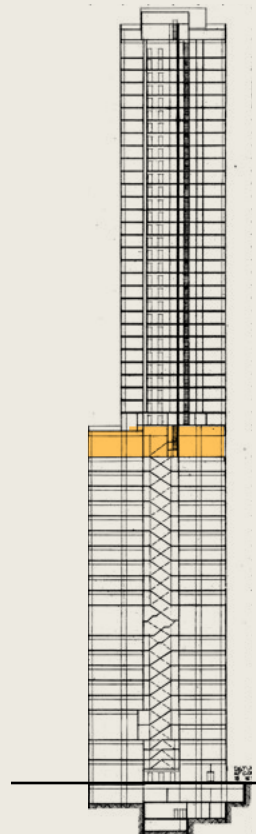
23,685

EAST 52ND STREET



FIFTH AVENUE

EAST 51ST STREET







21ST FLOOR  
VIEW ONLINE GALLERY OF 360° VIEWS AND VIDEO  
[OLYMPICTOWERNYC.COM/21ST](http://OLYMPICTOWERNYC.COM/21ST)



# 10TH FLOOR



# OLYMPIC TOWER

## 10TH FLOOR

645 FIFTH AVENUE  
AVAILABLE SPRING 2022

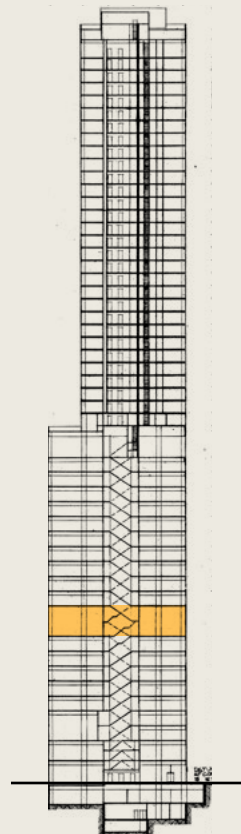
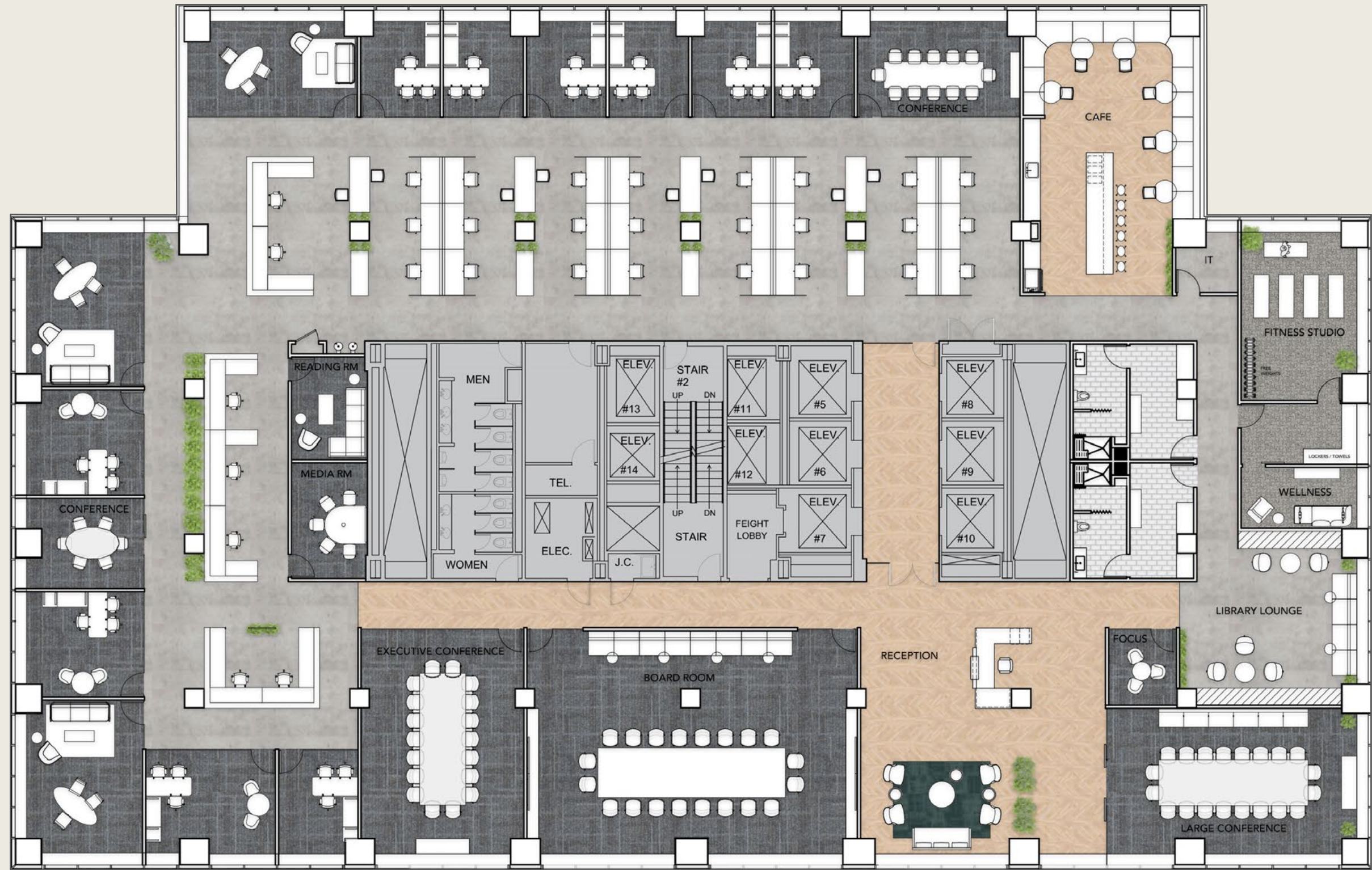
RSF

23,490

EAST 52ND STREET

FIFTH AVENUE

EAST 51ST STREET



NORTH-SOUTH  
ELEVATION





10TH FLOOR  
VIEW ONLINE GALLERY  
OF 360° VIEWS AND VIDEO  
[OLYMPICTOWERNYC.COM/10TH](http://OLYMPICTOWERNYC.COM/10TH)



# OLYMPIC TOWER

645 FIFTH AVENUE

## OXFORD

Oxford Properties Group (“Oxford”) is a leading global real estate investor, asset manager and business builder. It builds, buys and grows defined real estate operating business with world-class management teams. Established in 1960, Oxford and its portfolio companies manage approximately \$70 billion of assets across four continents on behalf of their investment partners. Oxford’s portfolio encompasses office, logistics, retail, multifamily residential, life sciences and hotels; it spans more than 150 million square feet in global gateway cities and high-growth

hubs. A thematic investor with a committed source of capital, Oxford invests in properties, portfolios, development sites, debt, securities and real estate businesses across the risk-reward spectrum. Together with its portfolio companies, Oxford is one of the world’s most active developers with over 100 projects currently underway globally across all major asset classes. Oxford is owned by OMERS, the Canadian defined benefit pension plan for Ontario’s municipal employees. For more information on Oxford, visit [www.oxfordproperties.com](http://www.oxfordproperties.com)

---

### CBRE

**NEIL KING**  
Vice Chairman  
Neil.King@cbre.com  
212.984.8352

**HOWARD FIDDLE**  
Vice Chairman  
Howard.Fiddle@cbre.com  
212.984.6525

**PAUL AMRICH**  
Vice Chairman  
Paul.Amrich@cbre.com  
212.984.8122

### OXFORD

**ADAM FRAZIER**  
Vice President – Head of New York  
AFrazier@oxfordproperties.com  
646.376.3141